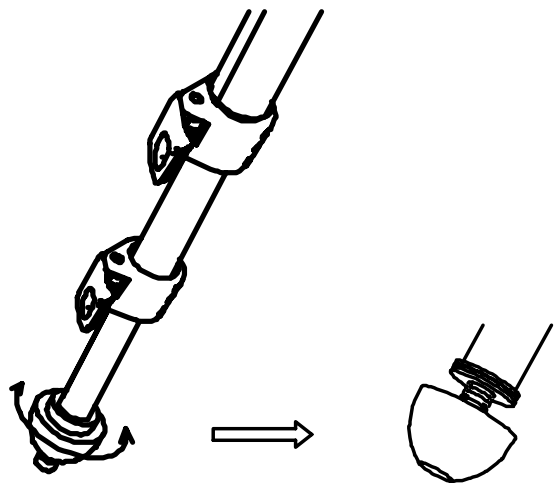


Retractable Leg Spikes

Your Sunpak 4300 Pro B tripod is equipped with retractable leg spikes for extra stability on outdoor surfaces. To use the leg spikes, turn each of the heavy duty rubber leg tips in a clockwise direction until they stop. To retract the leg spikes, turn the rubber leg tips in a counterclockwise direction until they stop.

Note: The leg spikes should only be used outdoors and caution should be exercised when handling the tripod with the spikes exposed.



Precautions

- Insure that all levers, handles, knobs and leg locks are properly tightened, and that all three legs are fully angled opened before use.
- Do not mount any camera directly onto the head mount screw located on the bottom of the tripod's center column. The screw may be longer than the tripod socket in your camera, and could possibly cause damage.
- Do not carry or transport the tripod with the camera equipment attached (as example but not limited to: over your shoulder or cradled in your arms).
- Do not Oil or Grease any part of the tripod.
- Do not use any solvents or thinners to clean your tripod. Use mild detergent and wipe dry with a soft, lint-free cloth only.
- Do not store or expose your tripod to excessive heat or cold or use close to any flame or fire.
- Do not exceed the load limit for this product.

SUNPAK LIMITED LIFETIME WARRANTY

This Sunpak product has been carefully manufactured, accurately adjusted, inspected and thoroughly tested before shipment to assure you of the highest quality.

Should this Sunpak product require service, we will repair or replace, at our option, any part or the product itself, which our examination shows to be defective in material or workmanship. This warranty does not apply to wear and tear associated with the normal use of the product. This warranty is non-transferable.

Repairs will be made to the product at no charge, under the terms of the warranty as stated above, only when accompanied by a dated and itemized bill of sale and the stated handling charge.

Be certain to follow all setup and/or operating instructions with this product. This warranty is not valid if the product has been misused or damaged in any way that is beyond our control or through normal wear and tear associated with use. This warranty applies only to the product and we are not responsible in any way for losses, damages or any inconvenience caused by equipment failure.

Some states do not allow the exclusion or limitation of consequential damages, so the above limitation or exclusion may not apply to you. This warranty gives you specific legal rights and you may have other rights which may vary from state to state.

Should service be required, the product should be carefully packed (in the original packaging if possible) and sent, prepaid and insured, along with a check or money order for \$9.95 (shipping and handling), to the address listed below. A note briefly describing the nature of the defect should also be enclosed to expedite handling.

Proof of purchase and payment for shipping and handling must be included for warranty repairs.

OWNER'S RECORD

Please complete this section and **retain with your original bill of sale for your records.**

Model Number: 4300 Pro B

Purchase Date: _____

Dealer's Name: _____

Address: _____

City: _____

State: _____ Zip Code: _____

ToCAD America Inc.
Sunpak Tripod Division
53 Green Pond Road
Rockaway, NJ 07866
973-627-9600
www.tocad.com

SUNPAK® 4300 Pro B

Operating Instructions

Congratulations on the purchase of your new Sunpak 4300 Pro B tripod. Your tripod has been designed to be a sturdy, rugged, and dependable product and will provide you with many years of reliable service.

Please spend a few moments reviewing these instructions, so that you can take full advantage of your tripod's features and capabilities.



Sunpak 4300 Pro B, Cat. no. 620-430B

4300 Pro B Specifications

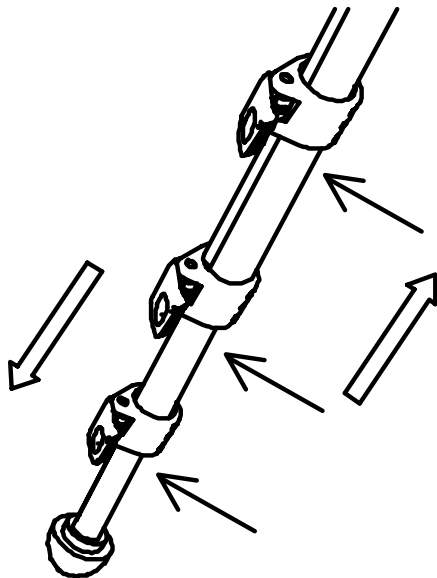
Maximum Height	66.7" (169.5 cm)
Minimum Height	20.3" (51.4 cm)
Minimum Height (grounder)	13.0" (33.0 cm)
Closed Length	22.0" (56.0 cm)
Load Capacity	6.6 lb (3.0 kg)
Weight	3.0 lb (1.36 kg)
Center Column	Split (2 section)
Leg Locks	Flip Lever
Leg Sections	4
Leg Angle	2-Step
Accessory Hook	1/4" x 20

Product design and specifications subject to change without notice.

Extending the Legs

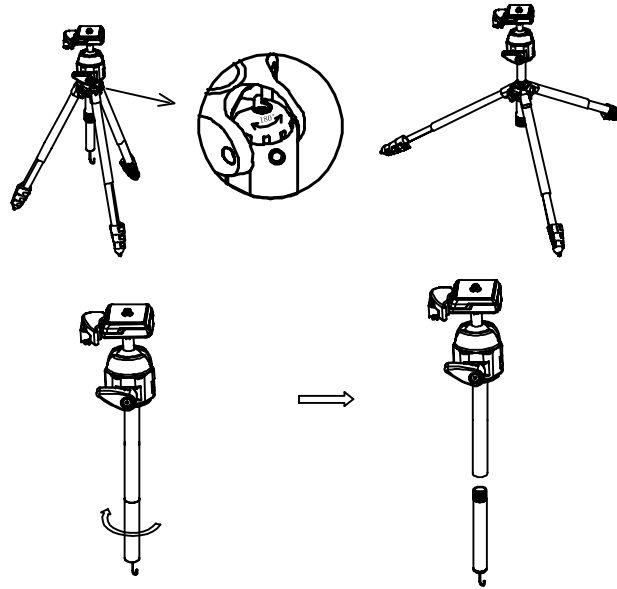
Each leg of the Sunpak 4300 Pro B has separate leg extensions which may be extended as needed. This permits setting your equipment at a comfortable height and can be very useful when positioning your tripod for uneven terrain.

To deploy any leg extension, flip the leg lock lever open in the direction as shown and gently pull on the leg to extend. To secure, press the leg lock in the opposite direction until it locks in place. Not properly securing a leg lock may cause the tripod leg to retract unexpectedly and result in damage to the camera and/or tripod.



Grounder Operation

At the top of each leg rotate the leg angle control 180 degrees to allow the leg to reach the grounder position. For minimum grounder height, remove the lower center column section as illustrated. It is not necessary to remove the accessory hook before removing the center column extension.

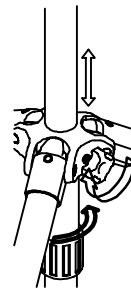


Extending the Center Column

Your Sunpak 4300 Pro B tripod is equipped with a Lift-n-Lock Column. To raise or lower the center column, loosen the Elevation Locking Knob on the side of the tripod chassis. Raise or lower the center column until the desired height is reached. Then tighten the Elevation Locking Knob to secure.

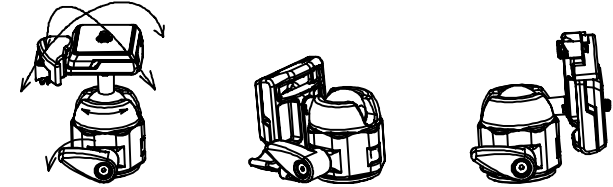
Center Column Tension Adjustment

You may also adjust the center column for different equipment loads. This can prevent your equipment from free falling when the Elevation Locking Knob is loosened.



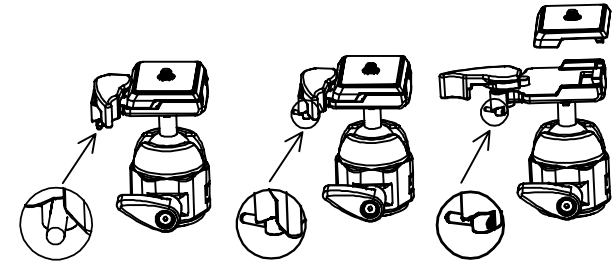
Ball Head Operation

To adjust the position of the ball head hold the camera with one hand and loosen the ball head locking knob with the other. Move the camera as desired and then tighten the locking knob.



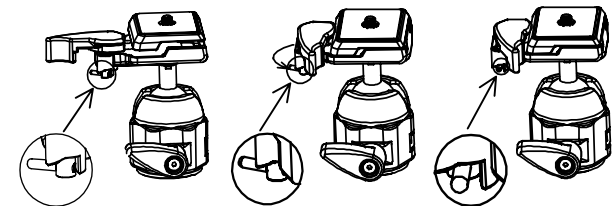
Removing the Quick Release Plate

To remove the quick release plate from the head, rotate the brass locking lever to the left. Then rotate the quick release lever outward and remove the plate.



Installing the Quick Release Plate

To reinstall the quick release plate, position the lip end of the plate into the receiver and press down; the lock lever will move back to the closed position. Then move the brass locking lever to the right to lock.



Locking Knob

For convenience, the locking knob can be pulled out and set at six different positions for ease of use and movement.

